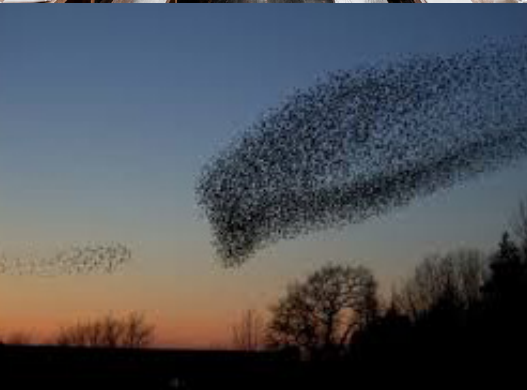


BRICKYARD



FARM COTTAGES

Explore.



Somerset is as surprising as it is beautiful. A county of cider, strawberries and cheese, rolling hills, picturesque villages, numerous nature reserves and three areas of outstanding natural beauty to explore - the Mendips, the Blackdown Hills and The Quantocks . The countryside and coastline is stunning and walking options are plentiful.

There are glorious stately homes and gardens to visit, country lane cycling, startling murmurations, artisan farmers markets and vintage flea markets, star gazing, friendly village pubs, coastal steam train rides, ancient churches, cider farms, antique hunting and boutique shopping.....





Our Story...

We are Fiona and Paul and we fell in love with Brickyard Farm the first time we drove down the long farm track, the peaceful rural setting yet so close to the village, the beautiful old barns and the views across to the Mendip Hills and we have been lucky enough to live here since 1999.

When we arrived Wilf's Barn was just a tumbledown barn, in 2005 we were granted planning permission to convert it into a holiday cottage designed and built by Paul. It is named after our first much loved collie. Sadly he is no longer with us but you may get a visit from our current dog Monty and our cats Pip and Poppy.

Ian's Cottage already existed when we moved here and Paul's father stayed here on his many visits to Somerset, he spent the last six months of his life here and we decided to name the cottage in remembrance of him. In 2008 we renovated the cottage as another holiday let.

We really enjoy having guests in our cottages and have met some lovely people over the years so in 2018 we applied and were granted permission to develop our final barn into a holiday let - Goose Feather Barn. It was a labour of love, again designed and built by Paul, taking almost a year to complete and opening in January 2020. Where possible we have re-used building materials, up cycled and sourced vintage items without compromising on quality to provide what we believe is a unique and comfortable place to stay.

Brickyard Farm was originally the site of the local brick making works here in Wedmore established in 1830 by John Tonkin. Clay was dug from the southern side to make bricks, tiles and urns, it closed in 1906 with only the brick drying shed and ancillary furnace room remaining. These buildings are now Goose Feather Barn and Wilf's Barn. In later years it became a working farm and although it is no longer a farm, we are still surrounded by fields where cattle graze on the lush and verdant Somerset grass. Badgers, buzzards, egrets, foxes, owls and deer are often seen in the garden and nearby.

Wedmore is one of Somerset's loveliest and most historic villages and we love welcoming guests to this beautiful part of the world and all it has to offer. Many return time and again. You may see us around and we're always happy to chat about

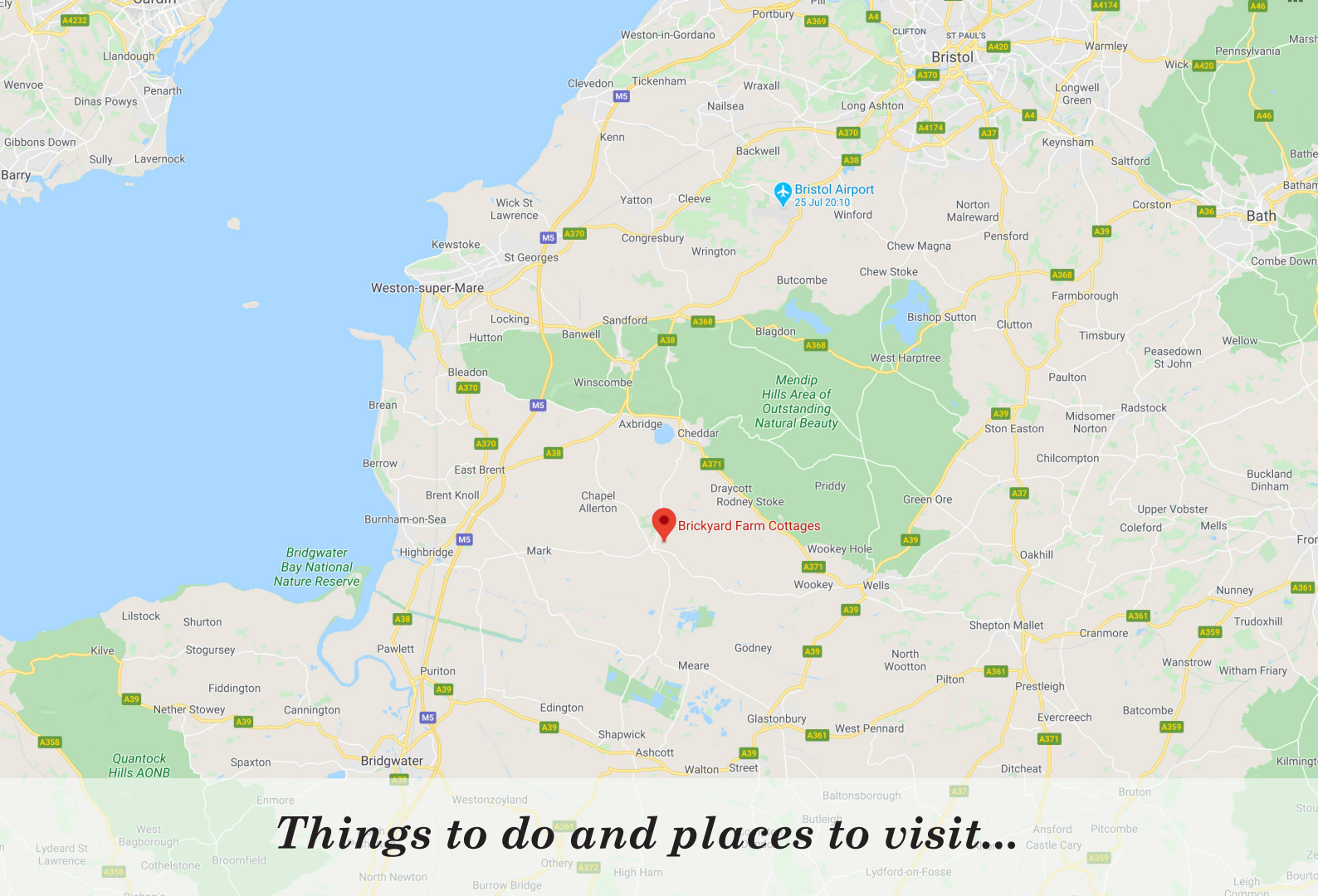
the area and give you suggestions, equally we're more than happy to leave you alone to enjoy your holiday.

Wedmore is a very friendly and welcoming village with a fantastic array of local shops and businesses. There are three lovely pubs and an indian restaurant as well as a deli and tea shops so there is no shortage of places to eat right on the doorstep. We are also lucky enough to have a village store, fishmonger/greengrocer, farm shop/butcher, chemist, art gallery and vintage and clothes shops, to name but a few. Everything you need is here and within walking distance of the cottages. No need to visit a supermarket!

Wedmore is also host to an Art festival in the Spring, Theatre and Opera events, the Harvest Home in August, a Real Ale festival in September and Wedmore by Lamplight in December. There is always something going on, if not in Wedmore itself in the villages around.

If history is your passion then Wedmore has plenty to offer. Most famously it was here that in 878 AD King Alfred the Great defeated the Danes and the Peace Treaty was signed. The village grew around a saxon square and the conservation area has many listed buildings. The Old Vicarage in Church Street dates back to 1492 and is on a roman site. St Mary's Church is mainly 15th and 16th century and The George Inn was a coaching Inn. In the Borough you will find the 14th century Market Cross. The chemists shop is an italianate building dating back to the early 1800's which in it's heyday was a department store and one of the largest fashion houses in Somerset. Nowadays the village with it's wonderful selection of shops and eateries still attracts tourists, shoppers and locals.

Being close to the Mendip Hills, an AONB, and the Somerset Levels there are excellent opportunities round here for walking, bird watching, riding and cycling. The local golf club in Wedmore is very friendly and there are amazing views from the back 9 holes. Nearby places to visit include the magnificent Wells Cathedral, magical Glastonbury Tor and Abbey, Cheddar Gorge and Wookey Hole caves. We are also within easy reach of many National Trust properties including Tyntesfield House. There is so much to see and do, we hope you fall in love with the area as much as we have.



Things to do and places to visit...

WEDMORE:

a five minute walk along a pretty farm track brings you to the centre of this picturesque and bustling village. A good selection of independent shops selling artisan and local produce including a fishmonger/greengrocer, butcher and delicatessen, clothes, shoes, art and antiques as well as three traditional Somerset pubs. Everything you need on your doorstep. Golf at the friendly Isle of Wedmore Golf Course - a parkland 18 hole course with panoramic views of the Mendip Hills and Somerset Levels. Clay pigeon shooting at Brook Bank Shooting Ground just outside Wedmore. Gliding at Mendip Gliding Club. Fishing at Lands End Fisheries, Heath House. Swimming, there is an outdoor pool at Street and indoor pools at Cheddar Leisure Centre. Why not bring your bicycle and spend a few days exploring the area, this is a very popular for cyclists, maps and cycle routes are provided and there is a shed for storing your bike.



WELLS:

The medieval city of Wells nestling on the side of the Mendip Hills is the smallest city in England famous for the beautiful 13th century Cathedral and moated Bishops Palace. The historic market place plays host to lively markets twice a week (Wednesday and Saturday).

GLASTONBURY:

visit mystical Glastonbury Tor which rises dramatically from the flat landscape of the Somerset Levels. There is also the Rural Life Museum and magical ruins of Glastonbury Abbey.



CHEDDAR GORGE:

Britain's biggest gorge with dramatic cliffs and caves beneath that you can visit and a great place for caving, climbing, walking and cycling.

SHAPWICK HEATH NATURE RESERVE:

A major wetland reserve, home to recently introduced Bittern. Here if you are lucky you might see otters, deer and a wealth of wild ducks and geese as well as the world famous murmurations of starlings throughout the winter months.

CLARKS VILLAGE OUTLET SHOPPING, Street:

Over 90 stores offering huge savings on designer labels and famous brands

KILVER COURT & MULBERRY OUTLET, Shepton Mallet:
includes Toast, Orla Kierly, LK Bennett. Visit the gardens and enjoy a light meal in the cafe.

CITY OF BATH:

Famous for it's Georgian architecture and the Roman Baths. Visit the Thermae Bath Spa for a day of pampering or wander through the city enjoying the eclectic mix of stylish boutiques, antique shops and big name brands.



BRISTOL:

One of the most culturally vibrant cities in the south of England hosting a wide variety of visual arts, theatre and live music and with a huge choice of restaurants, bars and shops. Visit the SS Great Britain and Brunel's famous Clifton Suspension Bridge.



TYNTESFIELD HOUSE NT, Nr Bristol:

Spectacular Victorian Gothic Revival house with gardens and parkland.

MONTACUTE HOUSE NT:

Glittering Elizabethan mansion and gardens

WESTON-SUPER-MARE:

A traditional seaside resort with miles of sandy beach, the Grand Pier, a seaquarium and Helicopter Museum.



BREAN DOWN:

Managed by the National Trust is a coastal headland between Weston- super- Mare and Burnham-on Sea which extends into the Bristol Channel with dramatic views to the islands of Steep Holm and Flat Holm and the welsh coast beyond. This is a lovely spot to blow away the cobwebs and enjoy a good walk.

KILVE BEACH:

Spectacular rock formations and fossils on the Bristol Channel. There is also a tea room where you can enjoy a nice somerset cream tea.



DUNSTER:

This medieval village is very picturesque with it's yarn market, packhorse bridge, mill and the castle which is run by the national trust. There are lot's of places to eat and a variety of shops to visit.



SLIMBRIDGE WILDFOWL AND WETLANDS TRUST:

325 hectares of world class wetlands set against a spectacular Severn Estuary backdrop, home to a wealth of resident and migratory wildlife.

HAYNES MOTOR MUSEUM:

Near Yeovil this is the largest exhibition of classic cars from around the world – over 400 cars and bikes.

FLEET AIR ARM MUSEUM, Ilchester, nr Yeovil:

Europe's largest collection of naval aircraft, more than a museum it is an exciting sonic and visual experience revealing the history of naval aviaation.

WEST SOMERSET RAILWAY:

Step back in time on a steam train journey from Bishops Lydeard to Minehead stopping at 10 picturesque stations - one of our favourite days out!





Food and Drink.

There are some amazing award winning pubs and restaurants close by, serving local ales and foods grown and produced in the region, here is a selection to consider.

A walk from us...

In Wedmore we are fortunate to have a great range of places to enjoy a variety of food and drink.

We advise booking ahead particularly at weekends to avoid disappointment. If you need a taxi it also pays to book in advance as there aren't many in the area. Lou's Taxi 07738610357.



The Swan

Our local gastropub open all day serving breakfast, coffee, cake and full meals in the restaurant. It has a lovely garden. Good food and a lively atmosphere.

Tel: 01934 710337

The George Inn

The Grade II listed George Inn was formerly a coaching inn and is full of character with a mix of old and new furniture and art and

lovely open fires in it's dining rooms. It also has a beer garden and small terrace to be enjoyed in the summer months
Tel: 01934 712124



The New Inn

A traditional village pub serving a good range of real ales and a simple pub menu

Tel:01934 712099

Table 8

An indian restaurant next to The George which also does takeaways.

Tel:01934 707080

Nanny Ida's

A family run restaurant opposite the church offering breakfast, lunch and cream tea

Tel:01934 710054

Pumpkin

Our local delicatessen where you can enjoy coffee and cake or a light lunch.

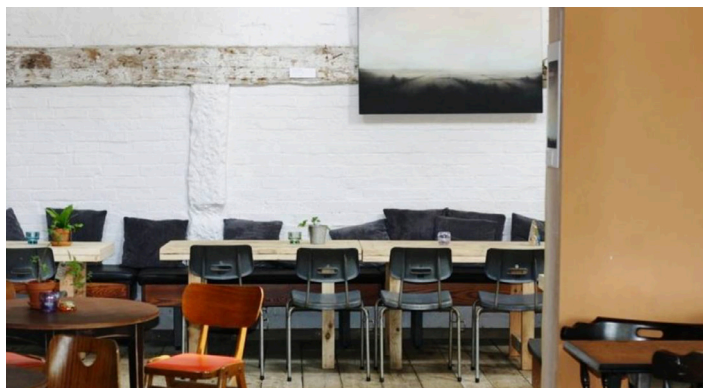
Tel:01934 713289

A short drive from us...

The Sheppey Inn, BA5 1RZ

Godney (10 min drive)

A quirky pub on the Somerset Levels serving delicious modern european food. It has a terrace area next to the river which is a lovely spot to have a drink in the supper and there is often live music. Tel: 01458 831594



The Bath Arms, BS27 3AA

Cheddar (10 min drive)

Delicious and innovative food.

Tel: 01934 742425



Zen Thai Restaurant, BS27 3QA

Cheddar (10 min drive)

Serving mouth watering authentic Thai dishes. Tel: 01934 740444 (10 minute drive)

White Horse Inn, TA94LT

Mark (10 min drive)

A traditional English village inn with homemade food. Booking recommended for Sunday lunch. Tel: 01278 641234

Wheatsheaf Inn, BS26 2NH

Stone Allerton (10 min drive)

Well worth visiting for it's home smoked specialties and now has a shop selling produce supplied by The Valley Smokehouse as well as artisan bread and local cheese.

Tel: 01934 444333



The Duck, TA7 8NU

Burtle (15 min drive)

A gastropub and Free House on the Somerset Levels serving fresh seasonal produce and happy to cater for vegetarian, vegan dairy and gluten free customers.

Tel: 01278 238282



The Bird in Hand,

Westhay has delicious home cooked food and a lovely open fire in the winter. Tel: 01458 860859 (10 minute drive)

The Wookey Hole Inn, BA5 1BP

Wookey Hole (20 min drive) is

Another local gastropub serving good food.

Tel: 01749 676677



Goodfellows, BA5 2RR

Wells (20 min drive)

Excellent seafood and fish restaurant.

Tel: 01749 673866

Roger Wilkins Cider Farm, BS28 4TU

Lands End Farm, Mudgley just outside Wedmore (5 min drive)

An experience not to be missed. Sample and buy his CAMRA award winning cider. Delicious cheddar and stilton cheese also available.

Open Mon-Sat, 10-8 Sunday 10-1.

Tel: 01934 712385

If you enjoy a carvery try the very popular

Cider Press Restaurant at Rich's Cider Farm in Mark TA9 4RD

Tel: 01278 794537

or

Brent House Carvery at East Brent TA9 4HL

Tel: 01278 760246

Further afield...

Pony and Trap, BS40 8TQ
Chew Magna (40 min drive)
Michelin star restaurant.
Tel: 01275 332627

Salt and Malt, BS40 8XS
Chew Valley Lake (40 min drive)
Great fish and chips on the bank of the lake
Tel: 01275 333345



Yeo Valley Canteen, BS40 7YE
Rhodyate (30 min drive)
Delicious breakfasts and lunches, quirky interior and spectacular views. Tel: 01761 462798



The Ethicurean Restaurant, BS40 5SA
Wrington (30 min drive)
Tucked away in a victorian walled garden where they grow their own produce and offer informal but delicious dining with amazing views over the Somerset countryside. Open for tea/coffee and cake as well as lunch and dinner.
Tel: 01934 863713



At The Chapel, BA10 0AE

Bruton (45 min drive)

A restaurant with a bakery and pizza oven in a Grade II listed former chapel serving modern British food using West Country produce.

Tel: 01749 814070



Roth Bar and Grill, BA10 0NL

Bruton (45 min drive)

The on site restaurant in the grounds of Hauser and Wirth art gallery serving delicious seasonal food. Tel: 01749 814700 (45 minute drive) BA10 0NL



Matts Kitchen, BA10 0AW

Bruton (45 min drive)

A single "dish of the day" menu with a selection of starters and desserts in Matt's stylish front room! Open for supper Wednesday, Thursday, Friday evenings. Bring your own booze. It's worth the journey.

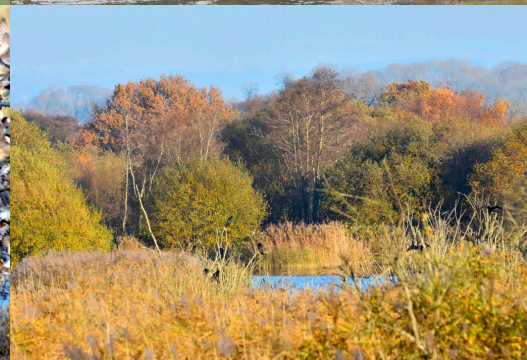
Tel: 01749 812027



There are some amazing farmers markets in the area offering local produce and artisan food, drink and craft.

A list of the local farmers markets can be found here

www.somersetfarmersmarkets.co.uk



Wildlife & Nature

If you are interested in wildlife, Wedmore is a wonderful centre, with widely differing countryside within easy reach and surrounded by the wide expanse of the wetland moors.

Somerset varies greatly in its countryside, from the Mendip and Quantock hills to the flat, water-bound Levels and Moors. It is a great place to walk, but much is also offered by its wildlife reserves. Within close reach of our part of the moors are numbers of interesting reserves, some run by the Somerset Wildlife Trust, others by English Nature and various other organizations. All are quite free to visit, though all would appreciate any records being sent to SERC or BRERC, the local wildlife record centres. The most likely places to be of interest are listed below, though many more exist and are always worth seeking out. Within half an hour or less, it is possible to see Bitterns and Great white egrets in summer; and peregrines, harriers and large numbers of waterfowl in the winter as well as marvellous starling murmurations. Call the Starling Hotline on 07866 554142

Moors and Levels:

Catcott Lows; Map Ref: ST400 413.

Free entry. Car-park right by the main hide, which overlooks a huge area flooded in the winter. Very large numbers of duck including Wigeon, Teal, Shoveler and Pintail, while Spoonbills, Whooper swans, Garganey and Glossy ibis are frequently seen in the Spring.

Greylake; ST39 35.

Free entry by boardwalk overlooking water and rough moorland. Large numbers of ducks in winter, with attendant predators – harriers, peregrines and buzzards.

Westhay Moor National Nature Reserve (NNR); ST456 437.

Free parking and entry. Large numbers of wildfowl, otters, egrets and many predators such as harriers and Hobbys, as well as large numbers of dragonflies.

Ham Wall NNR; ST45 39.

Free entry by car-park in common with Shapwick Heath; turn east for Ham Wall or west for Shapwick. Otters, harriers, Hobbys and wildfowl are found, while Bitterns and Great white egrets breed.

Shapwick Heath NNR; ST44 39.

Free entry. Many pairs of Bitterns breed here and summer sightings are frequent. Anything might turn, up from Bearded tits to Pied-billed grebes.

Mendip and nearby:

Blagdon Lake; ST51 60.

Entrance by daily or annual permit obtainable on site from Bristol Water. See Nigel Milbourne's website, 'www.blagdon birds' for details. The lake is artificial, looks quite natural and has been in existence for a great many years and has an amazing series of bird records. Orchids and other wild flowers complete an outstanding place to visit.

Chew Valley Lake; ST56 58.

Good public viewing on main road, otherwise daily or annual permits from Bristol Water. This large artificial lake is enormously attractive to huge numbers of wildfowl and other birds. Anything might arrive but good for unusual gulls, Ospreys and many rare migrants.

Waldegrave Pool and Stockhill forest:

Large free public car-park at ST549 515. The pool is famous for its dragonflies, sometimes in huge numbers; the forest has lovely walks through predominantly fir trees with lovely wild flowers, many colourful fungi as well as some unusual birds at times, such as Long-eared owls, Crossbills and Nightjars.

The Polden hills:

Collard Hill: ST487 344.

Free entry. Famous in June for large numbers of the very rare Large blue butterfly on a steep, grassy hillside.

Great Breach Wood: ST50 32.

Free entry through private woodlands, which also gives access to neighbouring reserves on the Polden ridge. Light woodland leads to flowery slopes on the edge of the scarp. Notable for butterflies and wild flowers.

"More information about the local wildlife can be found on InsectsandFlight.com set up by local photographer Robin Williams which includes a periodic West country diary from the Somerset moors."